

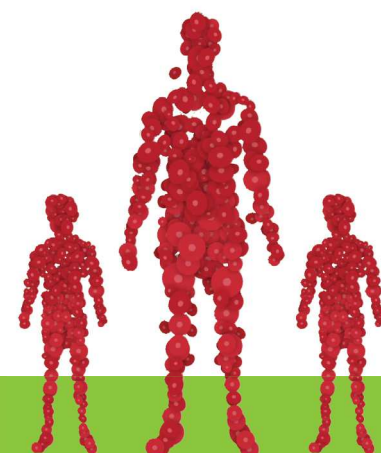
# RELEASES: Haemopoietic transplants

## How the Cell Care Group of companies are providing treatment options to families

### Cord blood units released for Haemopoietic Stem Cell Transplantation from Cell Care and Inception Lifebank

SITE OF CORD BLOOD COLLECTION	SITE OF CORD BLOOD TRANSPLANT	CONDITION	RECIPIENT	RELATIONSHIP OF RECIPIENT TO DONOR
Sydney South West Private, New South Wales, AUS	Children's Hospital Westmead, New South Wales, AUS	Severe Congenital Neutropenia	F - 5yrs	Sibling
Monash Medical Centre, VIC	Royal Melbourne Hospital, Victoria, AUS	Acute Lymphoblastic Leukaemia	M - 5yrs	Sibling
McMaster, Ontario, CAN	Hospital for Sick Children, Ontario, CAN	Alpha Thalassemia	M - 5yrs	Sibling
Credit Valley, Ontario, CAN	Hospital for Sick Children, Ontario, CAN	Acute Lymphoblastic Leukaemia	F - 4yrs	Sibling
Sydney Adventist Hospital, New South Wales, AUS	Children's Hospital Westmead, New South Wales, AUS	Acute Myeloid Leukaemia	M - 1yr	Self
Hospital Montfort, Ontario, CAN	Hospital for Sick Children, Ontario, CAN	Acute Myeloid Leukaemia	M - 1.5yrs	Sibling
Trillium, Ontario, CAN	Hospital for Sick Children, Ontario, CAN	Acute Myeloid Leukaemia	F - 4yrs	Sibling
Scarborough General, Ontario, CAN	Hospital for Sick Children, Ontario, CAN	Beta Thalassemia	M - 13yrs	Sibling
Northern Hospital, Victoria, AUS	Royal Melbourne Hospital, Victoria, AUS	Neuroblastoma	M - 4yrs	Self
Mount Sinai, Ontario, CAN	Hospital for Sick Children, Ontario, CAN	Retinoblastoma	M - 1yr	Self
Credit Valley, Ontario, CAN	Hospital for Sick Children, Ontario, CAN	Embryonal Supratentorial Tumor	F - 2yrs	Self
Greater Niagara General, Ontario, CAN	Hospital for Sick Children, Ontario, CAN	Myeloid Dysplasia	M - 2.5yrs	Sibling
Toronto East General, Ontario, CAN	Hospital for Sick Children, Ontario, CAN	Beta Thalassemia	F - 13yrs	Sibling
St. Joseph's, Ontario, CAN	Hospital for Sick Children, Ontario, CAN	Fanconi Anemia	M - 9yrs	Sibling
Ottawa Civic, Ontario, CAN	Hospital for Sick Children, Ontario, CAN	Leukaemia	F - 5yrs	Sibling
Headwaters, Ontario, CAN	Hospital for Sick Children, Ontario, CAN	Retinoblastoma	M - 9mths	Self
St. Joseph's, Ontario, CAN	Hospital for Sick Children, Ontario, CAN	Leukaemia	M - 2yrs	Sibling
Toronto General, Ontario, CAN	Hospital for Sick Children, Ontario, CAN	Beta Thalassemia	M - 3yrs	Cousin
Children's Hospital Westmead, New South Wales, AUS	Children's Hospital Westmead, New South Wales, AUS	Chronic granulomatous disease	M - 4yrs	Sibling

1 Ballen, K.K. et al. Umbilical cord blood donation: public or private? Bone Marrow Transplantation (2015) 1-8



# RELEASES: Regenerative medicine



## Cord blood units released for Regenerative Medicine from Cell Care and Inception Lifebank

SITE OF CORD BLOOD COLLECTION	SITE OF CORD BLOOD TRANSPLANT	CONDITION	RECIPIENT	RELATIONSHIP OF RECIPIENT TO DONOR
John Hunter Hospital, Newcastle, New South Wales, AUS	Childrens Cancer Centre Royal Melbourne Hospital VIC	Cerebral palsy	M - 7yrs	Sibling
Calvary North Adelaide Hospital, South Australia, AUS	Children's Hospital Westmead, New South Wales, AUS	(Risk of) Type 1 Diabetes	F - 12yrs	Self
King Edward Memorial, Western Australia, AUS	Royal Melbourne Hospital, Victoria, AUS	Cerebral palsy	F - 2yrs	Sibling
St George Public, New South Wales, AUS	Children's Hospital Westmead, New South Wales, AUS	Type 1 Diabetes	F - 1yr	Self
Prince George Regional Hospital, British Columbia, CAN	Duke University Medical Center, North Carolina, USA	Cerebral palsy	M - 7yrs	Self
Royal University Hospital, Saskatchewan, CAN	Duke University Medical Center, North Carolina, USA	Cerebral palsy	M - 1.5yrs	Sibling
BC Women's, British Columbia, CAN	Duke University Medical Center, North Carolina, USA	Cerebral palsy	M - 5yrs	Self
Home birth, Western Australia, AUS	Children's Hospital Westmead, New South Wales, AUS	Type 1 Diabetes	F - 4yrs	Self
Rockyview General, Alberta CAN	Duke University Medical Center, North Carolina, USA	Brain injury	M - 9yrs	Self
Scarborough Grace, Ontario, CAN	Duke University Medical Center, North Carolina, USA	Cerebral palsy	M - 2yrs	Self
Langley Memorial, British Columbia, CAN	Duke University Medical Center, North Carolina, USA	Brain injury	M - 11yrs	Self
St John of God, New South Wales, AUS	Duke University Medical Center, North Carolina, USA	Global Developmental Delay	F - 3yrs	Self
St. Joseph's, Ontario, CAN	Duke University Medical Center, North Carolina, USA	Cerebral palsy	F - 2.5yrs	Self
Joseph Brant, Ontario, CAN	Shands Hospital, Florida, USA	Type 1 Diabetes	M - 8yrs	Self
Women's College, Ontario, CAN	Shands Hospital, Florida, USA	Type 1 Diabetes	M - 11yrs	Self
Oakville Trafalgar, Ontario, CAN	Shands Hospital, Florida, USA	Type 1 Diabetes	M - 11yrs	Self
Foothills Medical Centre, Alberta, CAN	Duke University Medical Center, North Carolina, USA	Cerebral palsy	F - 10mths	Self
McMaster, Ontario, CAN	Shands Hospital, Florida, USA	Type 1 Diabetes	F - 6yrs	Self
Regina General, Saskatchewan, CAN	Shands Hospital, Florida, USA	Type 1 Diabetes	M - 3yrs	Self
Women's College, Ontario, CAN	Shands Hospital, Florida, USA	Type 1 Diabetes	M - 9yrs	Self
Mount Sinai, Ontario, CAN	Duke University Medical Center, North Carolina, USA	Cerebral palsy	M - 9mths	Self
Windsor Regional, Ontario, CAN	Duke University Medical Center, North Carolina, USA	Cerebral palsy	M - 2.5yrs	Self